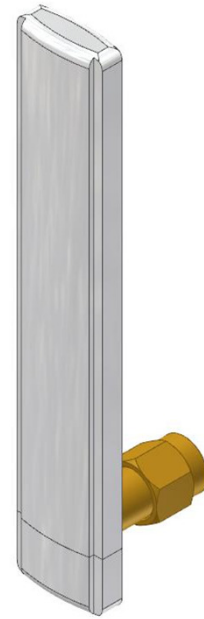


PCS Omni Antenna

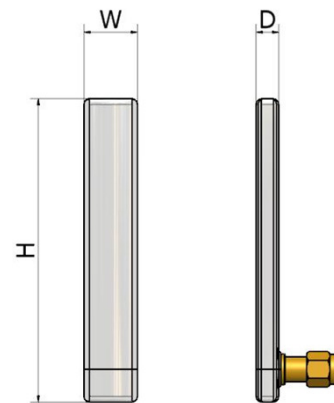
1710~1880 MHz / 2 dBi

PCS-MP-02

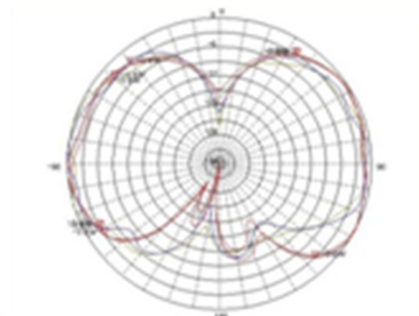
i. Electrical Specification	
Frequency Range (MHz)	1710 ~ 1880 MHz
Polarization	Omni
Band Width	170 MHz
Gain	≥ 2 dBi
Beam Azimuth	8 Type
Beam Elevation	≥ 60 °
F-B ratio	-
IMD (2x30dBm)	-140 dBc @ 3 rd -160 dBc @ 5 th
VSWR	≤ 1 : 1.5
Impedance	50 Ω
Maximum input power	1 W



ii. Mechanical Specification	
Radom Dimension (H x W x D)	78.5 x 14 x 6 mm
Weight (Exclude bracket)	≤ 50 g
Connector Type	SMA (Male)
Withstand Wind Pressure	-
Radome Material	ASA,ABS
Radome Color	White
Temperature	-40 °C ~ 70 °C
Packing Size (H x W x D)	-
Packing Weight	-



iii. Radiation Pattern



Vertical Pattern

Low Band

High Band